

| Outdoor Wall Light



UP DOWN LIGHT RANGE

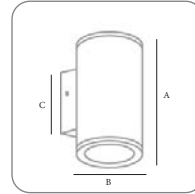
- Round wall mounted up & down light design
- Hi corrosion resistance di-cast aluminium body
- Compliance with CE and CB standards
- High luminous efficiency

Wall Up down Light



Figure 47.1

- Cylinder slim structured outdoor wall mount up & down light
- High corrosion resistance die-cast aluminium body structure
- Powered by high lumen cree LED light source



200-240 VOLTAGE	100lm/WATTS
0.0%	IP 65
25000 HOURS	ON OFF ≥1250
Hz 50/60 HZ	60°
Ra ≥80	P.F. >0.5
NOT DIMMABLE	<1 se

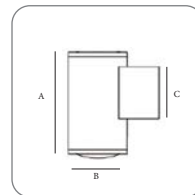
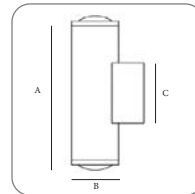
CCT — 3000K 4000K 6000K

Wall Up down Light



Figure 47.2

- Elegant design outdoor wall mount up & down light
- High corrosion resistance die-cast aluminium body structure
- Powered by high lumen cree LED light source



200-240 VOLTAGE	100lm/WATTS
0.0%	IP 65
25000 HOURS	ON OFF ≥1250
Hz 50/60 HZ	60°
Ra ≥80	P.F. >0.5
NOT DIMMABLE	<1 se

CCT — 3000K 4000K 6000K

Model	Watts	Voltage	P.F	Lumen	Dimension(mm)	Beam Angle	Image Code
LTX3066	2X3W	220-240V	>0.5	100lm/W	113X50X70	60°	Figure 47.1
LTX28810	1X10W	220-240V	>0.5	100lm/W	100X95X112	60°	Figure 47.2
LTX28820	2X10W	220-240V	>0.5	100lm/W	200X95X112	60°	Figure 47.2

Wall Decorative Light

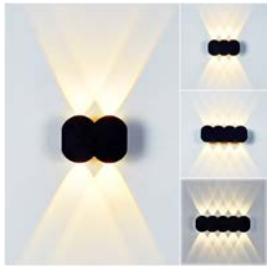
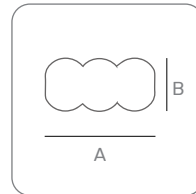
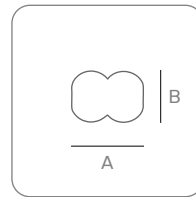


Figure 48.1

- Wall mounted decorative luminaire for outdoor installation on a facade/wall
- Solid structure design and high quality material acquired, providing higher safety level



220-240 VOLTAGE	90lm/WATTS
0.0%	IP 65
25000 HOURS	ON OFF ≥1250
Hz 50/60 HZ	45°
Ra ≥80	P.F. >0.5
NOT DIMMABLE	<1 se

CCT — 3000K 4000K 6000K

Wall Recessed Light

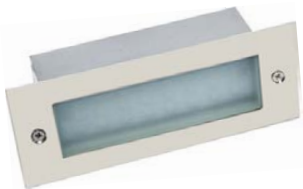
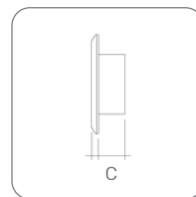
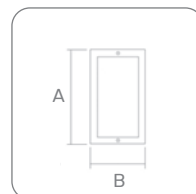


Figure 48.2

- Recessed rectangular step light for outdoor installation in the wall
- Tempered safety glass and high corrosion resistance die-cast aluminium body



220-240 VOLTAGE	90lm/WATTS
0.0%	IP 65
25000 HOURS	ON OFF ≥1250
Hz 50/60 HZ	100°
Ra ≥80	P.F. >0.5
NOT DIMMABLE	<1 se

CCT — 3000K 4000K 6000K

Model	Watts	Voltage	P.F	Lumen	Dimension(mm)	Beam Angle	Image Code
LTX3474	4W	220-240V	>0.5	90lm/W	110X80	45°	Figure 48.1
LTX3486	6W	220-240V	>0.5	90lm/W	160X80	45°	Figure 48.1
LTX6059S	3W	220-240V	>0.5	90lm/W	120X26	100°	Figure 48.2
LTX6059L	5W	220-240V	>0.5	90lm/W	170X26	100°	Figure 48.2