

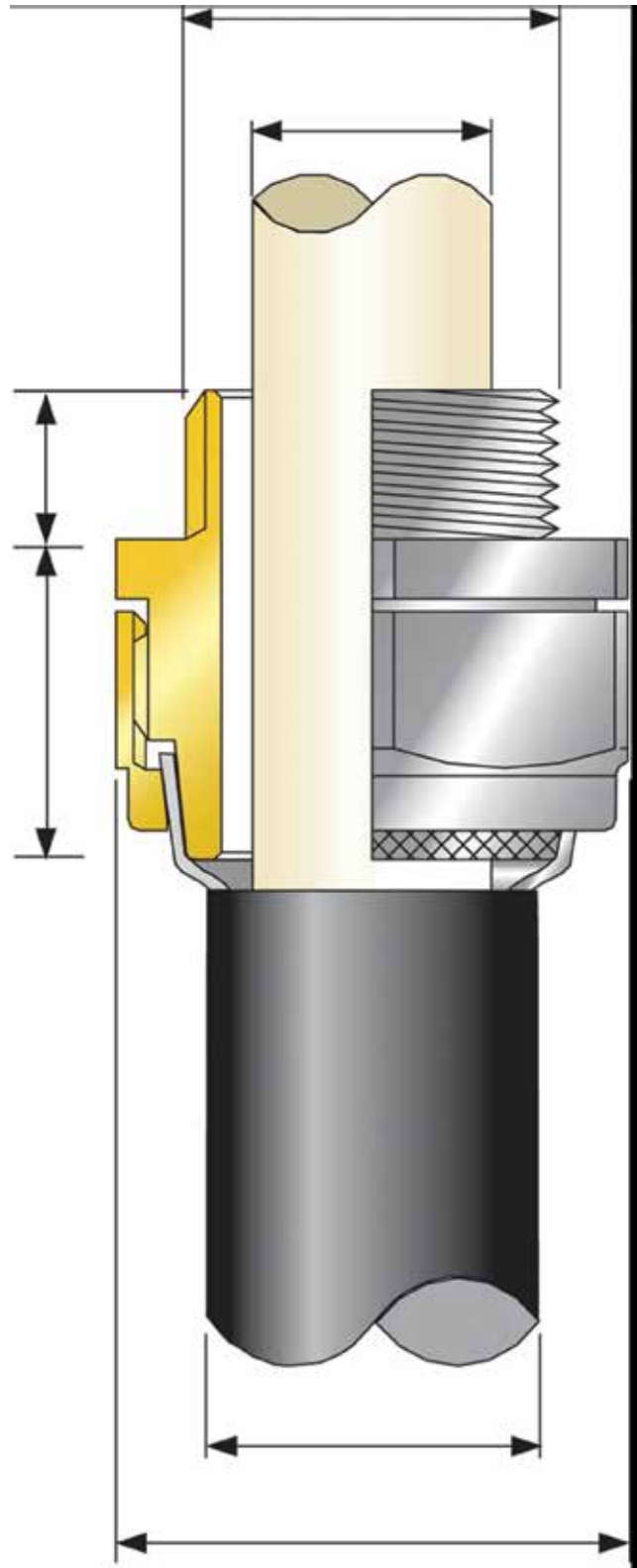
## CABLE GLAND KITS & ACCESSORIES

Lemax Cable Glands are mechanical cable entry devices that attach and secure the end of a cable to an enclosure or directly into equipment providing for mechanical support, earth continuity and protection against the ingress of dust and moisture. Additionally, in hazardous areas they prevent the migration of gases, control and contain any potential explosions.

When installing fire resistant and Low Smoke Zero Halogen (LSOH) cables it is important that the accessories used meet the same performance requirements as the cable. Thus the accessory does not impact on the system performance as a whole in the event of a fire. Lemax glands can offer specific glanding solutions. Look out for the FP, Afumex, FT and Saffire logos in the catalogue which highlight these.

Lemax Glands are manufactured in either aluminium, brass or nylon as standard. In the event, that the installation requires electrolysed nickel plated brass stainless steel these can also be supplied

Lemax Glands comply with international standards BS6121.



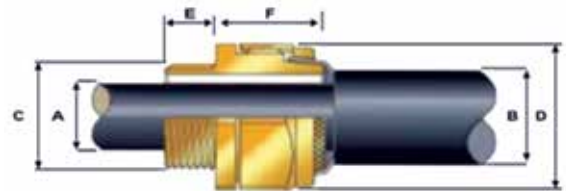
**BW GLAND KIT**

**Indoor Cable Gland**



**Kit Comprises:**

- BW Gland
- Brass Earth Tag
- Brass Locknut
- PVC Shroud



Brass indoor cable glands for use with all types of steel wire armoured cables inc BS 5467, BS 6622, BS 5308 for use in dry, indoor situations Recommended to use PVC shroud for additional ingress protection.

- Type** : BW
- Gland Material** : Brass
- Design Specification** : BS 6121 : PART 1: 1989
- Cable Type** : SWA/PVC
- Armour Clamping** : Two Part (Armour Lock)
- Entry Thread** : Metric/Imperial (ET)
- Finish** : Natural Brass

Cat #	Gland Ref. Entry Thread Dia & Length			Cable Dimensions		Armour Wire	Dia across flat F F/F-max.
	BW	DIA 'C'	L	Dia 'A'	Dia 'B'		
LMCG 20S	20S	20	10	12.3	16.0	0.9/1.25	21.0
LMCG 20L	20L	20	10	14.2	20.0	0.9/1.25	23.5
LMCG 25S	25S	25	10	18.0	23.8	1.25/1.6	31.0
LMCG 25L	25L	25	10	20.4	26.8	1.25/1.6	33.5
LMCG 32S	32S	32	15	26.5	33.2	1.6/2.0	40.1
LMCG 32L	32L	32	15	26.5	33.3	1.6/2.0	40.2
LMCG 40S	40S	40	15	32.5	40.9	1.6/2.0	50.4
LMCG 40L	40L	40	15	32.5	40.8	1.6/2.0	50.5
LMCG 50S	50S	50	15	38.5	47.0	2.0/2.5	56.7
LMCG 50L	50L	50	15	44.4	52.8	2.0/2.5	62.7
LMCG 63S	63S	63	15	50.5	60.2	2.0/2.5	70.0
LMCG 63L	63L	63	15	56.4	65.4	2.5	76.3
LMCG 75S	75S	75	15	62.2	72.0	2.5	88.0
LMCG 75L	75L	75	15	68.0	78.0	2.5	92.6
LMCG 90S	90	90	15	78.0	89.0	3.0	106.0

(All Dimensions in mm)

**BW LSOH GLAND KIT**

**Indoor Cable Gland**

Brass indoor cable glands for use with all types of LSOH steel wire armoured cables inc BS 5467, BS 6724, BS 7655, BS 8519, BS 6387, BS 7835 for use in dry, indoor situations. Recommended to use LSOH shroud for additional ingress protection.


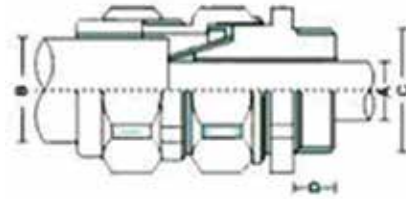
- Type** : BW
- Gland Material** : Brass
- Design Specification** : BS 6121 : Part 1: 1989
- Cable Type** : SWA / LSOH
- Armour Clamping** : Four Part (Armour Lock)
- Entry Thread** : Metric/Imperial (ET)
- Finish** : Natural Brass

**CW GLAND KIT**

**Indoor / Outdoor Cable Gland**

**Kit Comprises:**

- CW Gland
- Brass Earth Tag
- Brass Locknut
- PVC Shroud

- Type** : CW
- Gland Material** : Brass
- Design Specification** : Bs 6121 : Part 1: 1989
- Cable Type** : SWA/PVC
- Armour Clamping** : Knurling/Lock Ring
- Entry Thread** : Metric/Imperial (ET)
- Finish** : Natural Brass/Nickel Plated

Brass indoor and outdoor glands popularly used with all steel wire armoured cables. Terminates & secure cable armour along with outer sheath of the cable thus ensuring complete mechanical strength and earth continuity. Recommended to use pvc shroud for additional ingress protection.

Cat #	Gland Size	Cable Dimensions			Cable Dimensions				
		Under Armour Dia Max	Overall Dia Max	Armour Wire Dia	Dia 'A'	Dia 'B'	Metric Entry Thread 'C'	Minimum Thread Length 'D'	Across Flat 'F' Max
LMCG 20S	20S	11.6	15.8	0.9/1.25	12.3	17.0	20	10	24.0
LMCG 20L	20L	13.9	19.5	0.9/1.25	14.3	20.3	20	10	27.17
LMCG 25S	25S	19.9	26.0	1.25/1.6	20.8	26.9	25	10	34.3
LMCG 25L	25L	20.0	26.1	1.25/1.6	21.0	27.0	25	10	34.5
LMCG 32S	32S	25.2	33.5	1.6/2.0	26.9	34.1	32	10	42.9
LMCG 32L	32L	25.4	34.0	1.6/2.0	27.0	34.3	32	10	43.0
LMCG 40S	40S	32.1	39.9	1.6/2.0	32.5	41.8	40	15	50.8
LMCG 40L	40L	32.3	40.0	1.6/2.0	32.7	42.0	40	15	51.0
LMCG 50S	50S	39.5	49.0	2.0/2.5	40.9	50.2	50	15	61.7
LMCG 50L	50L	43.2	51.0	2.0/2.5	44.4	52.8	50	15	63.75
LMCG 63S	63S	50.6	58.9	2.0/2.5	51.8	61.9	63	15	73.9
LMCG 63L	63L	55.9	65.3	2.5	56.4	66.5	63	15	78.5
LMCG 75S	75S	61.9	71.6	2.5	63.2	74.2	75	20	90.0
LMCG 75L	75L	67.9	78.0	2.5	68.6	78.5	75	20	96.0


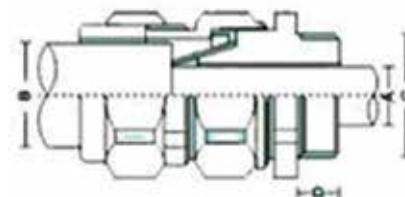
(All Dimensions in mm)

**CW LSOH GLAND KIT**

**Indoor / Outdoor Cable Gland**

**Kit Comprises:**

- CW Gland
- Brass Earth Tag
- Brass Locknut
- LSOH Shroud

- Type** : CW
- Gland Material** : Brass
- Design Specification** : Bs 6121 : Part 1: 1989
- Cable Type** : SWA / LSOH
- Armour Clamping** : Knurling/Lock Ring
- Entry Thread** : Metric/Imperial (ET)
- Finish** : Natural Brass/Nickel Plated

Brass indoor and outdoor glands popularly used with all steel wire armoured cables inc BS 6724, BS 8519, BS 6387, BS 7835. Terminates & secure cable armour along with outer sheath of the cable thus ensuring complete mechanical strength and earth continuity. Recommended to use LSOH shroud for additional ingress protection.

Cat #	Gland Size	Cable Dimensions			Cable Dimensions				
		Under Armour Dia Max	Overall Dia Max	Armour Wire Dia	Dia 'A'	Dia 'B'	Metric Entry Thread 'C'	Minimum Thread Length 'D'	Across Flat 'F' Max
LMCG 20S	20S	11.6	15.8	0.9/1.25	12.3	17.0	20	10	24.0
LMCG 20L	20L	13.9	19.5	0.9/1.25	14.3	20.3	20	10	27.17
LMCG 25S	25S	19.9	26.0	1.25/1.6	20.8	26.9	25	10	34.3
LMCG 25L	25L	20.0	26.1	1.25/1.6	21.0	27.0	25	10	34.5
LMCG 32S	32S	25.2	33.5	1.6/2.0	26.9	34.1	32	10	42.9
LMCG 32L	32L	25.4	34.0	1.6/2.0	27.0	34.3	32	10	43.0
LMCG 40S	40S	32.1	39.9	1.6/2.0	32.5	41.8	40	15	50.8
LMCG 40L	40L	32.3	40.0	1.6/2.0	32.7	42.0	40	15	51.0
LMCG 50S	50S	39.5	49.0	2.0/2.5	40.9	50.2	50	15	61.7
LMCG 50L	50L	43.2	51.0	2.0/2.5	44.4	52.8	50	15	63.75
LMCG 63S	63S	50.6	58.9	2.0/2.5	51.8	61.9	63	15	73.9
LMCG 63L	63L	55.9	65.3	2.5	56.4	66.5	63	15	78.5
LMCG 75S	75S	61.9	71.6	2.5	63.2	74.2	75	20	90.0
LMCG 75L	75L	67.9	78.0	2.5	68.6	78.5	75	20	96.0

(All Dimensions in mm)

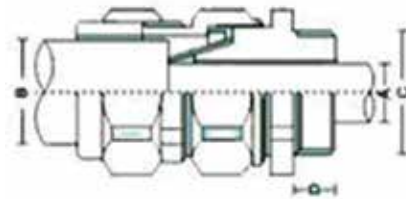
**CW AL GLAND KIT**

**Cable Gland**



**Kit Comprises:**

- CW-AL Gland
- Aluminium Earth Tag
- Aluminium Locknut
- PVC Shroud



**Features and Benefits:**

- Aluminium indoor & outdoor gland and accessories
- For Aluminium - wire armoured / PVC or Rubber sheathed cables
- Suitable for most climatic conditions, weatherproof and waterproof
- Three part armour lock with separate armour locking ring, ideal for checking electrical continuity
- No Risk of Bi-metallic corrosion when clamping Aluminium Armour

**Technical Information:**

Suitable for use with all Aluminium Wire Armoured

Constructed using 6082-T6 Aluminium alloy

Complies with BS EN 50262 & BS 6121-1: 1989

Gland rated to IP66 with use of suitable sealing washer or thread sealant at gland interface

Service temperature rang -20°C to +90°C

Cat #	Gland Size	Cable Dimensions			Cable Dimensions				
		Under Armour Dia Max	Overall Dia Max	Armour Wire Dia	Dia 'A'	Dia 'B'	Metric Entry Thread 'C'	Minimum Thread Length 'D'	Across Flat 'F' Max
LMCG 20S	20S	11.6	15.8	0.9/1.25	12.3	17.0	20	10	24.0
LMCG 20L	20L	13.9	19.5	0.9/1.25	14.3	20.3	20	10	27.17
LMCG 25S	25S	19.9	26.0	1.25/1.6	20.8	26.9	25	10	34.3
LMCG 25L	25L	20.0	26.1	1.25/1.6	21.0	27.0	25	10	34.5
LMCG 32S	32S	25.2	33.5	1.6/2.0	26.9	34.1	32	10	42.9
LMCG 32L	32L	25.4	34.0	1.6/2.0	27.0	34.3	32	10	43.0
LMCG 40S	40S	32.1	39.9	1.6/2.0	32.5	41.8	40	15	50.8
LMCG 40L	40L	32.3	40.0	1.6/2.0	32.7	42.0	40	15	51.0
LMCG 50S	50S	39.5	49.0	2.0/2.5	40.9	50.2	50	15	61.7
LMCG 50L	50L	43.2	51.0	2.0/2.5	44.4	52.8	50	15	63.75
LMCG 63S	63S	50.6	58.9	2.0/2.5	51.8	61.9	63	15	73.9
LMCG 63L	63L	55.9	65.3	2.5	56.4	66.5	63	15	78.5
LMCG 75S	75S	61.9	71.6	2.5	63.2	74.2	75	20	90.0
LMCG 75L	75L	67.9	78.0	2.5	68.6	78.5	75	20	96.0


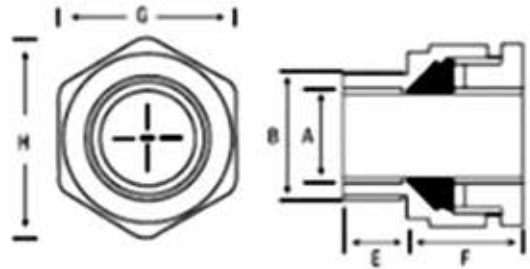
(All Dimensions in mm)

**A1/A2 GLAND KIT**

**Indoor Cable Gland**

**Kit Comprises:**

- A1/A2 Gland
- Brass Earth Tag
- Brass Locknut
- PVC Shroud

- TYPE** : A1/A2
- Gland Material** : Brass
- Design Specification** : BS 6121 : Part 1: 1989
- Cable Type** : Cu / PVC or Rubber
- Sealing Area** : Outer Sheath

A1/A2 Brass indoor and outdoor Cable Glands suitable for use with circular unarmoured plastic/rubber sheathed cables. This gland provides a seal on the outer sheath of the cable. Recommended to use pvc shroud for additional ingress protection.

Cat #	Gland Size	Cable Dimensions Accommodated		Gland Dimensions				
		Overall Dia		Dia 'A'	Dia 'B'	Metric Entry Thread 'C'	Minimum Thread Length 'D'	Across Flat 'F' Max
		Min	Max					
LMCG 220S	20S	8.0	11.5	11.9	15.4	20	15	23.6
LMCG 220L	20L	11.0	13.5	14.5	17.9	20	15	26.9
LMCG 225S	25S	13.0	16.5	16.5	20.3	25	15	30.5
LMCG 225L	25L	13.0	19.5	20.7	27.4	25	15	35.5
LMCG 232S/L	32S/L	19.0	25.5	26.9	31.7	32	15	41.3
LMCG 240S/L	40S/L	25.0	32.0	32.5	37.1	40	15	47.0
LMCG 250S	50S	31.5	37.0	38.6	44.2	50	15	55.0
LMCG 250L	50L	36.5	43.0	44.0	48.9	50	15	60.0
LMCG 263S	63S	42.5	50.0	50.3	56.1	63	15	64.8
LMCG 263L	63L	49.5	55.0	56.4	60.2	63	15	69.9
LMCG 275S	75S	54.5	61.0	62.2	67.2	75	15	78.8
LMCG 275L	75L	60.5	67.0	68.3	73.1	75	15	84.6
LMCG 290S/L	90S/L	65.0	78.0	70.5	80.3	90	15	102.6


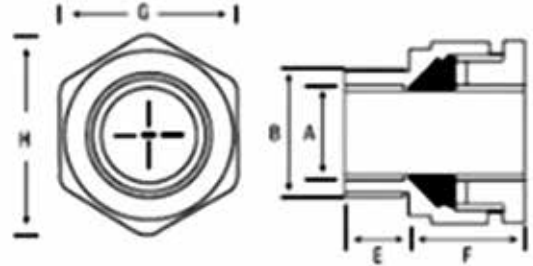
(All Dimensions in mm)

**A1/A2 LSOH GLAND KIT**

**Indoor Cable Gland**

**Kit Comprises:**

- A1/A2 Gland
- Brass Earth Tag
- Brass Locknut
- LSOH Shroud

- TYPE** : A1/A2
- Gland Material** : Brass
- Design Specification** : BS 6121 : Part 1: 1989
- Cable Type** : Cu / LSOH
- Sealing Area** : Outer Sheath

A1/A2 Brass indoor and outdoor Cable Glands suitable for use with circular LSOH unarmoured plastic/rubber sheathed cables. This gland provides a seal on the outer sheath of the cable. Recommended to use LSOH shroud for additional ingress protection.

Cat #	Gland Size	Cable Dimensions Accommodated		Gland Dimensions				
		Overall Dia		Dia 'A'	Dia 'B'	Metric Entry Thread 'C'	Minimum Thread Length 'D'	Across Flat 'F' Max
		Min	Max					
LMCG 220S	20S	8.0	11.5	11.9	15.4	20	15	23.6
LMCG 220L	20L	11.0	13.5	14.5	17.9	20	15	26.9
LMCG 225S	25S	13.0	16.5	16.5	20.3	25	15	30.5
LMCG 225L	25L	13.0	19.5	20.7	27.4	25	15	35.5
LMCG 232S/L	32S/L	19.0	25.5	26.9	31.7	32	15	41.3
LMCG 240S/L	40S/L	25.0	32.0	32.5	37.1	40	15	47.0
LMCG 250S	50S	31.5	37.0	38.6	44.2	50	15	55.0
LMCG 250L	50L	36.5	43.0	44.0	48.9	50	15	60.0
LMCG 263S	63S	42.5	50.0	50.3	56.1	63	15	64.8
LMCG 263L	63L	49.5	55.0	56.4	60.2	63	15	69.9
LMCG 275S	75S	54.5	61.0	62.2	67.2	75	15	78.8
LMCG 275L	75L	60.5	67.0	68.3	73.1	75	15	84.6
LMCG 290S/L	90S/L	65.0	78.0	70.5	80.3	90	15	102.6


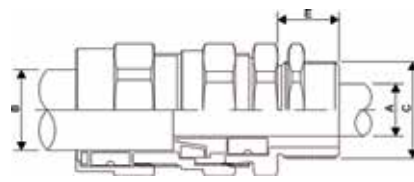
(All Dimensions in mm)

**E1W GLAND KIT**

**E1W Cable Gland**

**Kit Comprises:**

- E1W Gland
- Brass Earth Tag
- Brass Locknut
- PVC Shroud

- Type** : E1W
- Gland Material** : Brass
- Design Specification** : BS 6121 : Part 1: 1989
- Entry Thread** : SWA/PVC
- Finish** : Natural Brass/Nickel Plated upon request

Brass indoor and outdoor gland popularly used with all steel wire armoured cables. Terminates & secure cable armour along with outer sheath of the cable thus ensuring complete mechanical strength and earth continuity. Suitable for used in weatherproof and waterproof climate. Recommended to use pvc shroud for additional ingress protection.

Cat #	Gland Size	Cable Dimensions				Gland Dimensions				
		Under Armour Dia		Overall Dia	Armour Wire Dia	Dia 'A'	Dia 'B'	Metric Entry Thread 'C'	Minimum Thread Length 'D'	Across Flat 'F' Max
		Min	Max	Max						
LMCG 20S	20S	7.8	11.6	15.8	0.9/1.25	11.9	17.0	20	15	24.1
LMCG 20L	20L	11.8	13.9	19.5	0.9/1.25	14.5	20.3	20	15	27.2
LMCG 25S	25S	13.0	15.5	25.3	1.25/1.6	16.5	26.4	25	15	32.8
LMCG 25L	25L	14.0	19.9	26.0	1.25/1.6	20.7	27.4	25	15	35.9
LMCG 32	32	19.7	25.2	33.5	1.6/2.0	26.9	34.2	32	15	49.3
LMCG 40	40	29.1	32.1	39.9	1.6/2.0	32.5	41.8	40	15	50.8
LMCG 50S	50S	32.2	38.1	46.0	2.0/2.5	38.6	50.3	50	15	61.7
LMCG 50L	50L	38.4	43.2	51.0	2.0/2.5	44	52.8	50	15	63.75
LMCG 63S	63S	44.1	50.0	58.9	2.0/2.5	50.3	62.0	63	15	73.9
LMCG 63L	63L	50.1	55.9	65.3	2.5	56.4	66.5	63	15	78.5
LMCG 75S	75S	56.0	61.9	71.6	2.5	62.2	74.3	75	15	87.5
LMCG 75L	75L	62.0	67.9	78.0	2.5	68.3	78.5	75	15	96.0
LMCG 90	90	68.0	74.0	88.0	3.00	70.5	90.2	90	15	105.5

(All Dimensions in mm)


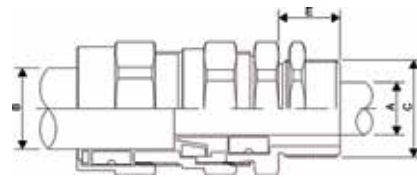


**E1W LSOH GLAND KIT**

**E1W LSOH Cable Gland**

**Kit Comprises:**

- E1W Gland
- Brass Earth Tag
- Brass Locknut
- LSOH / (PCP Shroud upon request)

- Type** : E1W
- Gland Material** : Brass
- Design Specification** : BS 6121 : Part 1: 1989
- Entry Thread** : SWA/LSOH or FR
- Finish** : Natural Brass/Nickel Plated upon request

Brass indoor and outdoor gland popularly used with all LSOH / FR steel wire armoured cables inc BS 6724, BS 8519, BS 7846, BS 6387, BS 7835. Terminates & secure cable armour along with outer sheath of the cable thus ensuring complete mechanical strength and earth continuity. Suitable for used in weatherproof and waterproof climate. Recommended to use pvc shroud for additional ingress protection.

Cat #	Gland Size	Cable Dimensions				Gland Dimensions				
		Under Armour Dia		Overall Dia	Armour Wire Dia	Dia 'A'	Dia 'B'	Metric Entry Thread 'C'	Minimum Thread Length 'D'	Across Flat 'F' Max
		Min	Max	Max						
LMFRE1W	20S	7.8	11.6	15.8	0.9/1.25	11.9	17.0	20	15	24.1
LMFRE1W	20L	11.8	13.9	19.5	0.9/1.25	14.5	20.3	20	15	27.2
LMFRE1W	25S	13.0	15.5	25.3	1.25/1.6	16.5	26.4	25	15	32.8
LMFRE1W	25L	14.0	19.9	26.0	1.25/1.6	20.7	27.4	25	15	35.9
LMFRE1W	32	19.7	25.2	33.5	1.6/2.0	26.9	34.2	32	15	49.3
LMFRE1W	40	29.1	32.1	39.9	1.6/2.0	32.5	41.8	40	15	50.8
LMFRE1W	50S	32.2	38.1	46.0	2.0/2.5	38.6	50.3	50	15	61.7
LMFRE1W	50L	38.4	43.2	51.0	2.0/2.5	44	52.8	50	15	63.75
LMFRE1W	63S	44.1	50.0	58.9	2.0/2.5	50.3	62.0	63	15	73.9
LMFRE1W	63L	50.1	55.9	65.3	2.5	56.4	66.5	63	15	78.5
LMFRE1W	75S	56.0	61.9	71.6	2.5	62.2	74.3	75	15	87.5
LMFRE1W	75L	62.0	67.9	78.0	2.5	68.3	78.5	75	15	96.0
LMFRE1W	90	68.0	74.0	88.0	3.00	70.5	90.2	90	15	105.5

(All Dimensions in mm)