

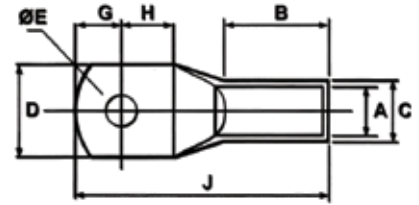
COPPER TUBE CRIMPING LUGS

Standard : BS 4579/IEC-61238-1:2003

Material : Electrolytic High Conductivity Copper

Finish : Electro Tinned

Features : With or Without Inspection Hole



Lemax Series are manufactured from electrolytic copper tube. The dimensions of the tube are designed to obtain the most efficient electrical conductivity and mechanical strength to resist vibration and pull out.

Lemax Lugs are electrolytically tin plated to avoid oxidation and it meets the highest quality requirements and complies with BS standards.

Lemax lugs are annealed to guarantee optimum ductility which is an absolute necessity for connectors which will have to withstand the severe deformation arising when compressed and any bending of the palm during installation.

In application subject to vibration, lugs still have to provide a reliable connection and annealing plays a vital role in avoiding cracking or breaks between the barrel and palm.

The presence of an inspection hole facilitates full insertion of the conductor, whilst the barrel length has been designed to allow easy and accurate positioning of the dies during the crimping operation.

Product Ref.	Stud Hole E	Conductor Size mm ²	Dimensions mm					
			A	C	D	G + H	B	J
LMCL 1:5:4	4.2	1.5	1.8	3.7	8	6	9	17
LMCL 1:5:5	5.2				8	6	9	17
LMCL 1:5:6	6.4			10	6	10	19	
LMCL 2:5:4	4.2	2.5	2.4	4.0	8	8	9	19
LMCL 2:5:5	5.2				10	8	9	19
LMCL 2:5:6	6.2				10	8	11	21
LMCL 4:4	4.2	4	3.1	4.8	10	8	11	21
LMCL 4:5	5.2				10	8	11	21
LMCL 4:6	6.2				10	8	11	21
LMCL 6:5	5.2	6	3.8	5.5	10	10	11	24
LMCL 6:6	6.2				10	10	11	24
LMCL 6:8	8.5				12	10	12	28
LMCL 10:6	6.5	10	4.5	6.2	11	10	13	26
LMCL 10:8	8.5				12	10	15	28
LMCL 10:10	10.5				15	11	19	33
LMCL 16:6	6.5	16	5.4	7.1	12	12	14	31
LMCL 16:8	8.5				12	12	14	31
LMCL 16:10	10.5				15	12	20	36
LMCL 25:6	6.5	25	6.8	8.8	13	12	14	30
LMCL 25:8	8.5				13	12	14	30
LMCL 25:10	10.5				15	13	21	38
LMCL 35:6	6.2	35	8.2	10.6	16	14	18	38
LMCL 35:8	8.5				16	14	18	38
LMCL 35:10	10.5				16	14	18	38
LMCL 50:8	8.5	50	9.5	12.4	18	17	19	42
LMCL 50:10	10.5				18	17	19	42
LMCL 50:12	13.0				20	17	22	45
LMCL 70:8	8.5	70	11.3	14.6	21	19	22	47
LMCL 70:10	10.5				21	19	22	47
LMCL 70:12	13.0				21	19	22	47
LMCL 70:14	14.5				22	19	28	54

(All Dimensions in mm)

COPPER TUBE CRIMPING LUGS

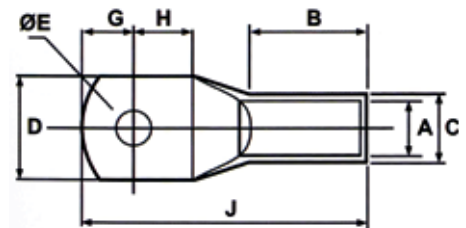
Standard : BS 4579/IEC-61238-1:2003

Material : Electrolytic High Conductivity Copper

Finish : Electro Tinned

Features : With or Without Inspection Hole

Product Ref.	Stud Hole E	Conductor Size mm ²	Dimensions mm					
			A	C	D	G+H	B	J
LMCL 95: 10	10.5	95	13.5	17.4	25	25	21	53
LMCL 95: 12	13.0				25	27	21	53
LMCL 95: 14	14.5				25	29	22	55
LMCL 120: 10	10.5	120	15	19.4	28	27	23	60
LMCL 120: 12	13				28	27	23	60
LMCL 120: 14	14.5				28	27	23	60
LMCL 120: 16	17.0				28	32	23	64
LMCL 150: 10	10.5	150	16.5	21.2	30	32	27	70
LMCL 150: 12	13				30	32	27	70
LMCL 150: 14	14.5				30	32	27	70
LMCL 150: 16	17.0				30	32	27	70
LMCL 185: 10	10.5	185	18.5	23.5	34	36	32	80
LMCL 185: 12	13				34	36	32	80
LMCL 185: 14	14.5				34	36	32	80
LMCL 185: 16	17				34	36	32	80
LMCL 240: 12	13	240	21.0	26.5	38	40	37	94
LMCL 240: 14	14.5				38	40	37	94
LMCL 240: 16	17				38	40	37	94
LMCL 240: B	-				38	40	37	94
LMCL 300: 12	13	300	23.5	30.0	43	44	42	101
LMCL 300: 14	14.5				43	44	42	101
LMCL 300: 16	17				43	44	42	101
LMCL 300: 20	21				43	44	42	101
LMCL 400: 13	14.5	400	28.5	36.5	52.5	52	44	114
LMCL 400: 14	17				52.5	52	44	114
LMCL 400: 16	21				52.5	52	44	114
LMCL 400: B	-				52.5	52	44	114
LMCL 500: 14	14.5	500	30.0	39.0	56	56	48	129
LMCL 500-16	17				56	56	48	129
LMCL 500-20	21				56	56	48	129
LMCL 500-B	-				56	66	58	148
LMCL 630: 16	17	630	35.0	45.0	64	66	58	148
LMCL 630: 20	21				64	66	58	148
LMCL 630: B	-				64	66	58	148
LMCL 630: 16	17	630-light	35.0	41.5	61	56	70	144
LMCL 630: 20	21				61	56	70	144
LMCL 630: B	--				61	56	70	144
LMCL 800: 16	17	800	39.0	50.6	72	..	78	170
LMCL 800: 20	21				72	..	90	170
LMCL 800:B	--				72	170
LMCL 1000:B	--	1000	43.0	56.2	78.5	200
LMCL 1200-B	--	1200	47.0	61.0	85	230

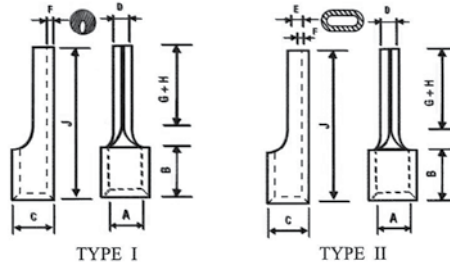


(All Dimensions in mm)

UNINSULATED PIN CONNECTORS

Material : Electrolytic High Conductivity-Copper

Finish : Electro Tinned Plated



Lemax series pin connectors are designed to terminate conductors to contact blocks and its manufactured from Tin plated copper strips.

Product Ref.	Size mm ²	Dimensions mm							TYPE
		A	C	D	F	B	G+H	J	
LMCTL-1.5	1.5	1.6	3.2	1.9	0.8	5	10	17	I
LMCTL-2.5	2.5	2.3	3.9	1.9	0.8	5	10	17	I
LMCTL-4	4	2.9	4.9	2.7	1	6	10	20	I
LMCTL-6	6	3.6	5.6	2.7	1	6	10	20	I
LMCTL-6	6	4	6	2.7	1	6	10	20	I
LMCTL-10	10	4.5	6.7	4.3	1.1	8	12	22	II
LMCTL-16	16	5.8	8.2	5.5	1.2	10	13	26	II
LMCTL-25	25	7.5	11.1	7.2	1.8	11	15	33	II
LMCTL-35	35	9	12.6	8.2	1.8	12	15	33	II
LMCTL-50	50	10.5	14.1	9	1.8	16	17	41	II
LMCTL-70	70	12	16	10	2	16	16	46	II
LMCTL-95	95	13.5	18.1	10	2.3	20	20	51	II

INSULATED PIN TYPE TERMINALS

Colour Coding of Insulation Sleeve

1.5 - RED, 2.5 - BLUE, 4 - 6 - YEL

Product Ref.	Size mm ²	Dimensions mm									TYPE
		A	C	D	F	B	G+H	J	C1	J1	
LMPTL-1.5	1.5	1.6	3.2	1.9	0.8	5	10	17	4.8	10	I
LMPTL-2.5	2.5	2.3	3.9	1.9	0.8	5	10	17	5.5	10	I
LMPTL-4	4	2.9	4.9	2.7	1	6	10	20	7.1	14	I
LMPTL-6	6	3.6	5.6	2.7	1	6	10	20	7.1	14	I
LMPTL-6	6	4	6	2.7	1	6	10	20	7.9	14	I
LMPTL-10	10	4.5	6.7	4.3	1.1	8	12	22	7.9	16	II
LMPTL-16	16	5.8	8.2	5.5	1.2	10	13	26	10	20	II

(All Dimensions in mm)

